

HEZ8585RAI

Image Size: $\frac{1}{2}$ $\frac{1}{3}$ $\frac{1}{4}$

[SPECIFICATIONS]

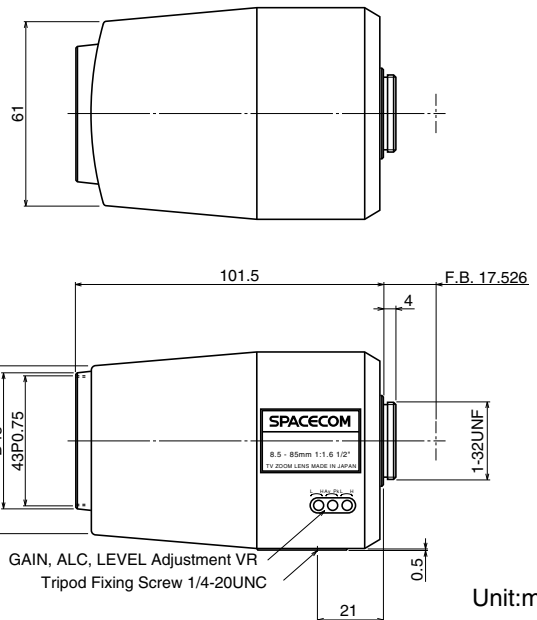
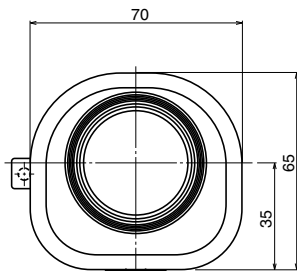
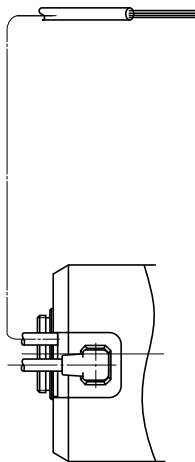
| | | | |
|-------------------------------|--|-------------------------|--|
| Focal Length : | 8.5 - 85mm | Photometry Range : | Approx. 40% - 70% Variable to Vp-p |
| Maximum Relative Aperture : | 1:1.6 | Input Impedance : | High Impedance |
| Iris : | F1.6 - Approx. 360 (With ND Spot Filter) | Operation : Zoom : | Motorized(DC+/-6.4V, Max40mA) Speed Approx. 6.5sec. |
| Zoom Ratio : | 10X | Focus : | Motorized(DC+/-6.4V, Max40mA) Speed Approx. 6.5sec. |
| Sensitivity Adjustment : | 0.5 - 1.0Vp-p(Image Signal) | Iris : | EE (DC+8.5 to 16V : Fixed Voltage, Max50mA) Speed Within 4sec.(Auto Close System) |
| Angular Field of View : | 41.3 X31.5 deg. at 8.5mm 4.3 X 3.2 deg. at 85mm | EE Mechanism : | The built-in EE Amp amplifies the difference between the video signal from the camera and the Iris signal level. |
| Image Format : | 6.4X4.8mm(D8mm) | EE Accuracy : | With Input Video Signal 0.7Vp-p Within+/-10% of Mean Value |
| Minimum Object Distance : | 1.2m(From Front Vertex) | Operation Temperature : | -10 to +50 |
| Object Dimensions at M.O.D. : | 86.5X64.9cm at 8.5mm 8.6X 6.5cm at 85mm | Mount : | C-Mount(Adjustable Lens Position) |
| Optical Back Focal Distance : | 15.56mm(In Air) | Front Thread : | 43mm P0.75 |
| Flange Back : | 17.526mm | Size, Weight : | 70X65X101.5mm, Approx. 275g |
| Input Signal : | Composite Video Signal or Video Signal | | |

[COMPOSITION]

Lens1
Lens Cap1
Dust Cap1
VR Adjust Tool1

4-Conductor Connector(Female)1
(Any 4-conductor cable of external dia 6mm to be prepared separately.)

[DIMENSIONS]



Unit:mm

[CIRCUIT DIAGRAM]

