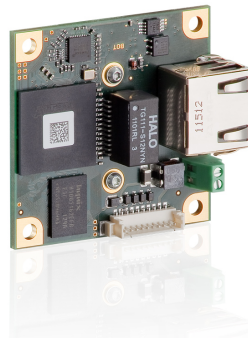
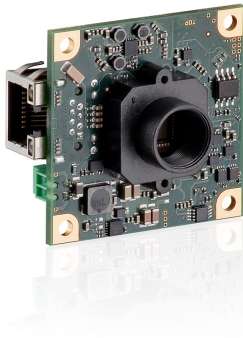


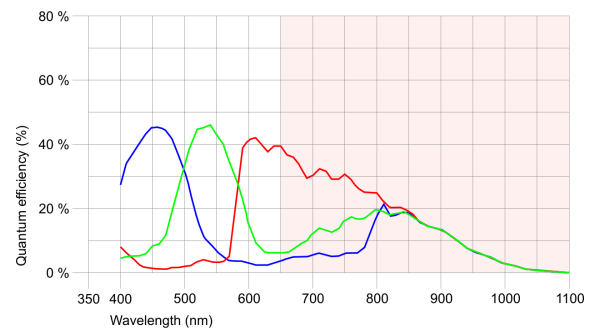
## UI-5241LE-C



## Specification

### Sensor

Sensor Technology	CMOS Color
Manufacturer	e2v
Resolution (h x v)	1280 x 1024
Color depth (sensor)	10 bit
Color depth (camera)	12 bit
Pixel Class	1.x MP
Sensor Size	1/1.8"
Shutter	Rolling shutter/Global shutter/Global start shutter
max. fps in Freerun Mode	50.0
Binning Modes	M/C automatic
Subsampling Modes	-
Sensor Model	EV76C560ACT
Pixel size	5.3 $\mu\text{m}$
Optical Size	6.784 mm x 5.427 mm

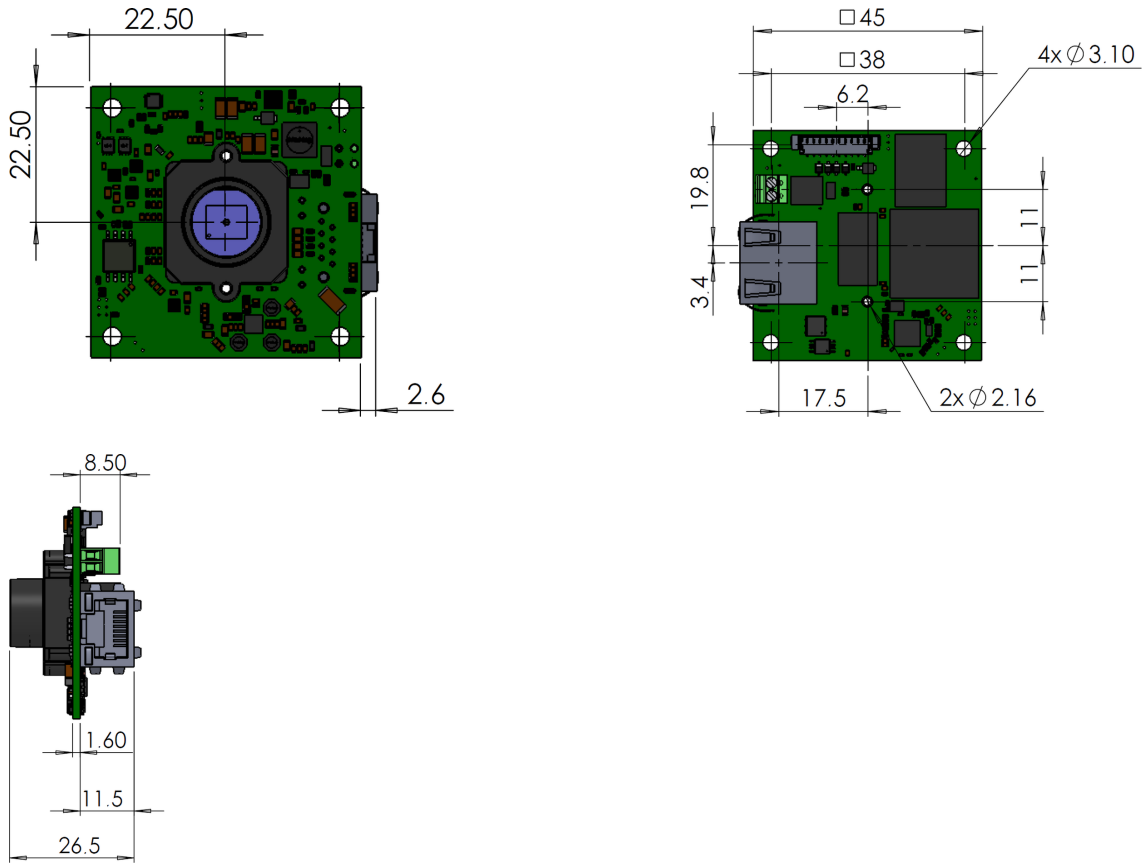


### Design

Interface	GigE
Lens Mount	M12-long
I/O In	1 x TTL
I/O Out	1 x TTL
I/O RS-232	-
I/O GPIO	2
I/O I2C	1
Protection Class	-
Dimensions H/W/L	45.0 mm x 45.0 mm x 26.4 mm
Mass	24 g
Power supply	12V - 24V

Subject to technical modifications

## UI-5241LE-C



Subject to technical modifications