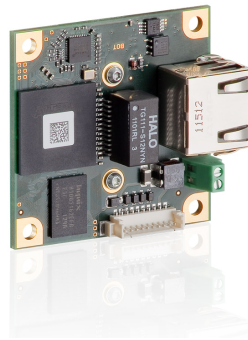
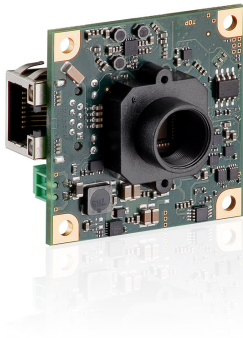


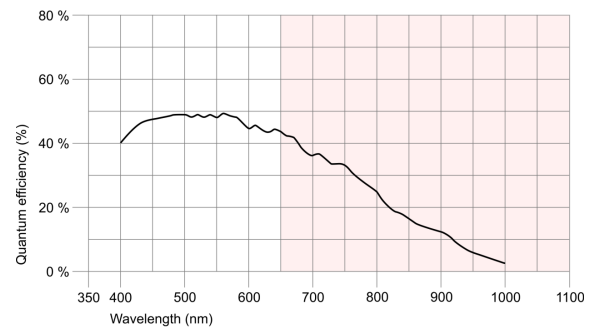
UI-5251LE-M



Specification

Sensor

Sensor Technology	CMOS Mono
Manufacturer	e2v
Resolution (MPix)	2.00
Resolution (h x v)	1600 x 1200
ADC	10 bit
Color depth (camera)	12 bit
Pixel Class	2 MP
Sensor Size	1/1.8
Shutter	Rolling shutter/Global shutter/Global start shutter
max. fps in Freerun Mode	35.6
Binning Modes	M/C automatic
Subsampling Modes	-
Sensor Model	EV76C570ABT
Pixel size	4.5 µm
Optical Size	7.200 mm x 5.400 mm
Optical sensor diagonal	9 mm (1/1.78")



Design

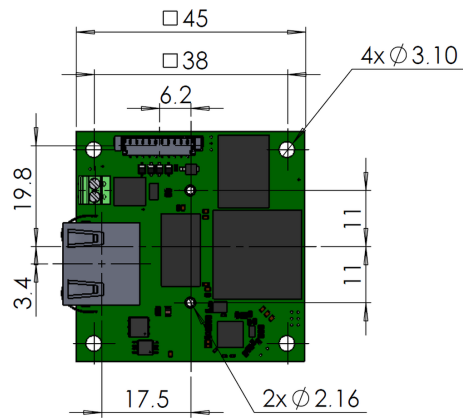
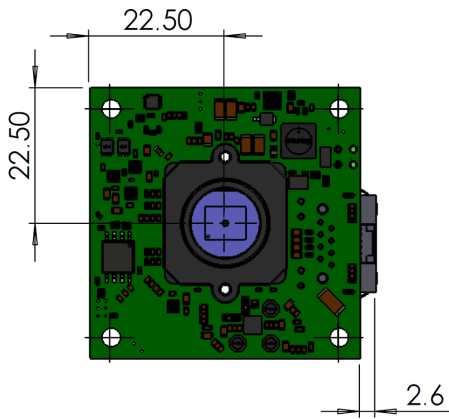
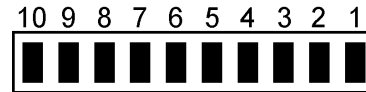
Interface	GigE
Lens Mount	M12-long
I/O In	1 x TTL
I/O Out	1 x TTL
I/O RS-232	-
I/O GPIO	2
I/O I ² C	1
IP code	-
Dimensions H/W/L	45.0 mm x 45.0 mm x 26.4 mm
Mass	24 g
Power supply	12V - 24V

Subject to technical modifications

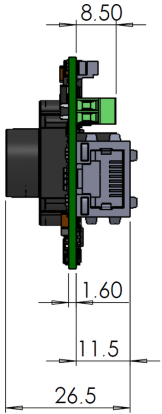
UI-5251LE-M

Pin assignment I/O connector

1	Ground (GND)
2	Vout 3,1 V max. 100 mA
3	Trigger input
4	Flash output
5	GPI01
6	GPI02
7	I2C bus clock signal
8	I2C bus data signal
9	Vin+ 12 V (160 mA) - 24 V (90 mA)
10	Vin-



UI-5251LE-M



Subject to technical modifications

Page 3 of 3

<http://www.ids-imaging.com>